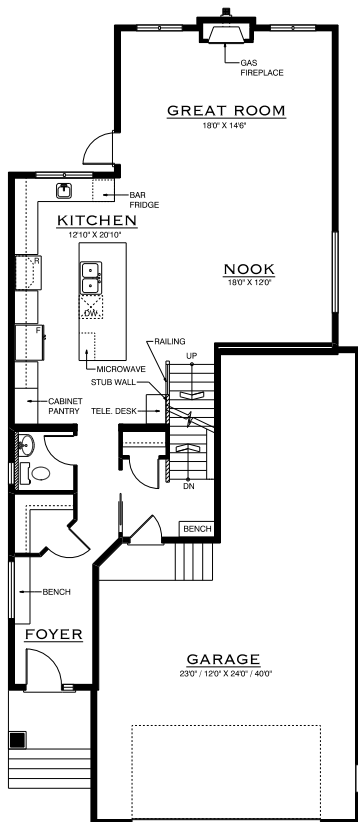




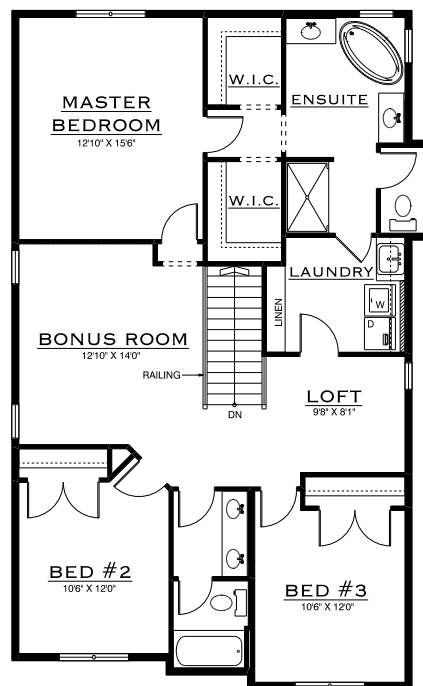
FEATURES

- Double tandem garage, with ample space for tools, toys or even a 3rd parked car
- Entertainer's dream kitchen with open main floor layout
- Oversized island and bar fridge
- 11' ceiling in great room
- His and Hers walk-in closets in master suite
- Access to laundry from master suite

firstave.ca

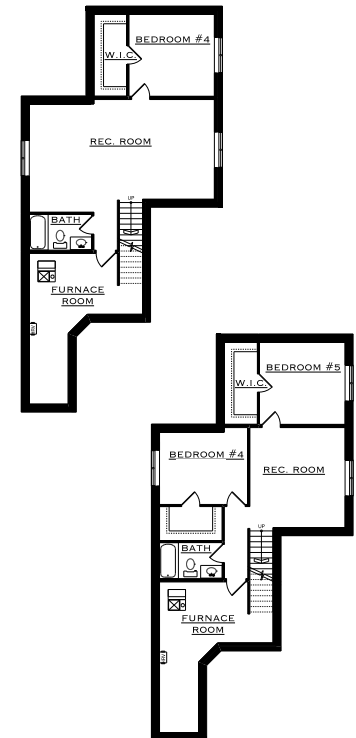


MAIN FLOOR
1,057 sq. ft.



SECOND FLOOR
1,270 sq. ft.

DEVELOPED BASEMENT
(Option A - 683 sq. ft.)



DEVELOPED BASEMENT
(Option B - 683 sq. ft.)